



These test results are for Research and Development purposes only

1 of 1

Gold Standard

Sample

Sour Space Candy

Strain

0.71%	20.87%	24.92%
Total THC	Total CBD	
Not tested	Pass	
Water Activity	8.18	Total
	Moisture	Cannabinoids



Sample ID

20102710642

Matrix

Flower

Metric

Harvest/Prod Date

Report Created

10/23/2020

Results Valid Until

10/23/2021

Sample Extracted

10/21/2020 19:10

Sample Analyzed

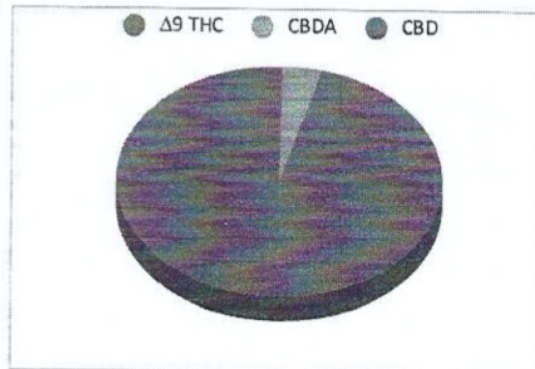
10/22/2020 16:12

Cannabinoids

%Weight

LOQ(% w/w)

Δ9 THC	0.00	0.1
THCA	0.81	0.1
CBDA	22.88	0.1
CBD	0.81	0.1
CBN	0.00	0.1
‡ Δ8 THC	0.00	0.1
‡ CBC	0.00	0.1
‡ CBGA	0.42	0.1
‡ CBG	NR	0.1



Total THC and Total CBD are calculated values per OAR 333-064-0100. Cannabinoid values for plant matter samples are reported on a dry weight basis. Water activity action level is 0.65Aw. LOQ= Limit of Quantitation. NR=Not Reported 0.00 = Not Detected above LOQ

Rogue Research Lab LLC

218 E. Main Street, Rogue River, OR 97537

Tel. 541-582-1962

ORELAP 4107 OLCC 101050708B

rogue-researchlab.com

Craig Berry - Lab Director



ROGUE RESEARCH LAB

Results pertain to submitted samples only. Rogue Research Lab LLC makes no claims as to the consumer safety or other risks associated with any detected or non-detected amounts of any pesticides, solvents or other adulterants. This report shall not be reproduced, unless in its entirety, without written approval from Rogue Research Lab LLC. Samples were received in good condition and all QC samples met acceptance criteria of the method; data available upon request. Analytes accompanied by dagger (‡) are not within the scope of accreditation and are for informational purposes only.



Gold Standard

Sample Lifter

Strain

0.00%	20.33%	24.15%
Δ^9 THC	Total CBD	Total Cannabinoids
0.48 AW	Pass	241.5
Water Activity	9.05 Moisture	mg / g Total Cannabinoids

Sample ID 20113000725

Matrix Flower

Metric

Harvest/Prod Date

Report Created 12/1/2020

Results Valid Until 12/1/2021

Sample Extracted

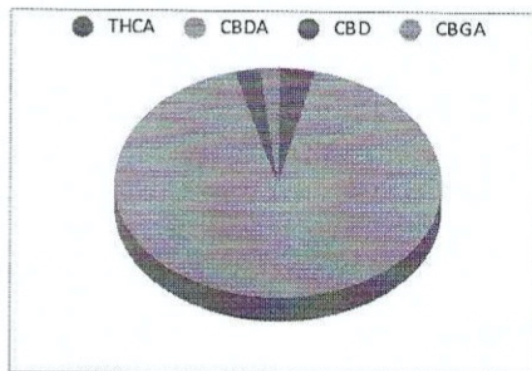
11/20/2020 11:10

Sample Analyzed

11/20/2020 17:38



Cannabinoids	%Weight	mg/ gram	LOQ(% w/w)
Δ^9 THC	0.00	0.0	0.1
THCA	0.87	8.7	0.1
CBDA	22.23	222.3	0.1
CBD	0.62	6.2	0.1
CBN	0.00	0.0	0.1
‡ Δ^8 THC	0.00	0.0	0.1
‡ CBC	0.00	0.0	0.1
‡ CBGA	0.43	4.3	0.1
‡ CBG	0.00	0.0	0.1



Total THC and Total CBD are calculated values per OAR 333-064-0100. Cannabinoid values for plant matter samples are reported on a dry weight basis. Water activity action level is 0.65Aw. LOQ= Limit of Quantitation. NR=Not Reported 0.00 = Not Detected above LOQ

Rogue Research Lab LLC

218 E. Main Street, Rogue River, OR 97537

Tel. 541-582-1962

ORELAP 4107 OLCC 101050708B

rogueresearchlab.com

Craig Berry - Lab Director



ROGUE RESEARCH LAB

Results pertain to submitted samples only. Rogue Research Lab LLC makes no claims as to the consumer safety or other risks associated with any detected or non-detected amounts of any pesticides, solvents or other adulterants. This report shall not be reproduced, unless in its entirety, without written approval from Rogue Research Lab LLC. Samples were received in good condition and all QC samples met acceptance criteria of the method; data available upon request. Analytes accompanied by dagger (‡) are not within the scope of accreditation and are for informational purposes only.



These test results are for Research and Development purposes only

Powered by Confident Cannabis
1 of 1

Gold Standard

Sample: 2001RRL0018.0049

OR 97530

Strain: Kush

Batch#: ; Batch Size: g


Sample Received: 01/17/2020; Report Created: 01/27/2020; Expires: 01/27/2021

Kush

Plant, Flower - Cured, Outdoor

Harvest Process Lot: ; METRC Batch: ; METRC Sample:



	0.32%	11.27%	13.55%
	Total THC	Total CBD	
	Not Tested NT	Pass 10.2%	Total Cannabinoids
	Water Activity	Moisture	

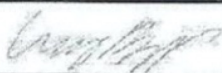
Cannabinoids

Complete

Analyte	LOQ	Mass	Mass
	%	%	mg/g
THCa	0.10	0.37	3.7
Δ9-THC	0.10	<LOQ	<LOQ
Δ8-THC	0.10	ND	ND
CBDa	0.10	12.70	127.0
CBD	0.10	0.13	1.3
CBN	0.10	ND	ND
CBGa	0.10	0.35	3.5
CBG	0.10	NR	NR
CBC	0.10	ND	ND
Total		13.55	135.5

Total THC = THCa * 0.877 + Δ9-THC

Total CBD = CBDa * 0.877 + CBD; LOQ = Limit of Quantitation; The reported result is based on a sample weight with the applicable moisture content for that sample; Unless otherwise stated all quality control samples performed within specifications established by the Laboratory.

218 E. Main St
Rogue River, OR
(541) 582-1962
<http://www.rogue-researchlab.com>
Lic# 4107-001Craig Berry
Lab DirectorConfident Cannabis
All Rights Reserved
support@confidentcannabis.com
(866) 506-5866
www.confidentcannabis.com

This product has been tested by Rogue Research Labs, LLC using valid testing methodologies. Values reported relate only to the product tested. Rogue Research Labs, LLC makes no claims as to the efficacy, safety or other risks associated with any detected or non-detected levels of any compounds reported herein. This Certificate shall not be reproduced except in full, without the written approval of Rogue Research Labs, LLC.



These test results are for Research and Development purposes only

1 of 1

Gold Standard

Sample

Hawaiian Haze

Strain

0.66%	19.72%	23.69%
Total THC	Total CBD	
Not tested	Pass	
Water Activity	8.41	Total
	Moisture	Cannabinoids

Sample ID

20102710639

Matrix

Flower

Metric

Harvest/Prod Date

Report Created

10/23/2020

Results Valid Until

10/23/2021

Sample Extracted

10/21/2020 19:10

Sample Analyzed

10/22/2020 15:36

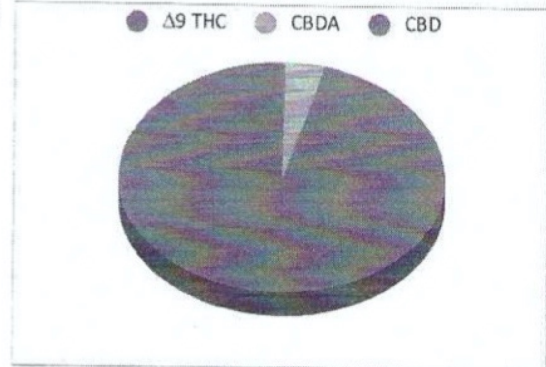


Cannabinoids

%Weight

LOQ(% w/w)

Δ9 THC	0.00	0.1
THCA	0.75	0.1
CBDA	21.97	0.1
CBD	0.45	0.1
CBN	0.00	0.1
‡ Δ8 THC	0.00	0.1
‡ CBC	0.00	0.1
‡ CBGA	0.53	0.1
‡ CBG	NR	0.1



Total THC and Total CBD are calculated values per OAR 333-064-0100. Cannabinoid values for plant matter samples are reported on a dry weight basis. Water activity action level is 0.65Aw. LOQ= Limit of Quantitation. NR=Not Reported 0.00 = Not Detected above LOQ

Rogue Research Lab LLC

218 E. Main Street, Rogue River, OR 97537

Tel. 541-582-1962

ORELAP 4107 OLCC 101050708B

rogue-researchlab.com

Craig Berry - Lab Director



ROGUE RESEARCH LAB

Results pertain to submitted samples only. Rogue Research Lab LLC makes no claims as to the consumer safety or other risks associated with any detected or non-detected amounts of any pesticides, solvents or other adulterants. This report shall not be reproduced, unless in its entirety, without written approval from Rogue Research Lab LLC. Samples were received in good condition and all QC samples met acceptance criteria of the method; data available upon request. Analytes accompanied by dagger (‡) are not within the scope of accreditation and are for informational purposes only.



These test results are for Research and Development purposes only

Page 1 of 1

Gold Standard

Sample Moonrock

Strain Batch 2

0.00%	62.55%	67.79%
$\Delta 9$ THC	Total CBD	Total Cannabinoids
Not tested	Pass	677.9
Water Activity	0.96 Moisture	mg / g Total Cannabinoids

Sample ID **21020220073**
Matrix **Distillate in Flower**

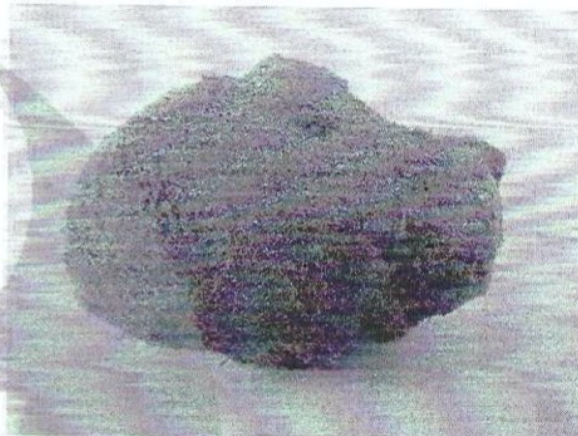
Metric
Harvest/Prod Date

Report Created **2/4/2021**

Results Valid Until **2/4/2022**

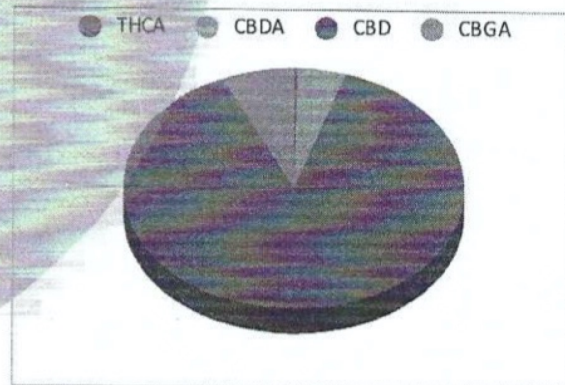
Sample Extracted
2/3/2021 9:05

Sample Analyzed
2/3/2021 19:23



Cannabinoids %Weight mg/gram LOQ(%/w)

$\Delta 9$ THC	0.00	0.0	0.09
THCA	0.18	1.8	0.09
Total THC ($THCA \times 0.877 + 9THC$)	0.15	1.5	0.09
CBDA	3.10	31.0	0.09
CBD	59.79	597.9	0.09
CBN	0.00	0.0	0.09
‡ $\Delta 8$ THC	0.00	0.0	0.09
‡ CBC	0.00	0.0	0.09
‡ CBGA	4.72	47.2	0.09
‡ CBG	0.00	0.0	0.09



Total THC and Total CBD are calculated values per OAR 333-064-0100. Cannabinoid values for plant matter samples are reported on a dry weight basis. Water activity action level is 0.65Aw. LOQ= Limit of Quantitation. NR=Not Reported. 0.00 = Not Detected above LOQ

Rogue Research Lab LLC
218 E. Main Street, Rogue River, OR 97537
Tel. 541-582-1962
ORELAP 4107 OLCC 101050708B
rogue-research-lab.com

Craig Berry
Craig Berry - Lab Director
2/4/21



ROGUE RESEARCH LAB

Results pertain to submitted samples only. Rogue Research Lab LLC makes no claims as to the consumer safety or other risks associated with any detected or non-detected amounts of any pesticides, solvents or other adulterants. This report shall not be reproduced, unless in its entirety, without written approval from Rogue Research Lab LLC. Samples were received in good condition and all QC samples met acceptance criteria of the method; data available upon request. Analytes accompanied by dagger (‡) are not within the scope of accreditation and are for informational purposes only.